

PRECISION ALUMINUM WELDING: Tips and Tricks for Micro Applications

Learn how to achieve high-quality, hermetic,
and mechanically reliable welds

Aluminum is widely used in manufacturing because of its strength-to-weight ratio, corrosion resistance, and excellent thermal and electrical conductivity. But the characteristics that make it so desirable also make it notoriously difficult to weld, particularly at micro scales (<1 mm in joint penetration and weld width). Understanding aluminum's material properties and how best to manage them is the key to success, no matter what project you're working on.

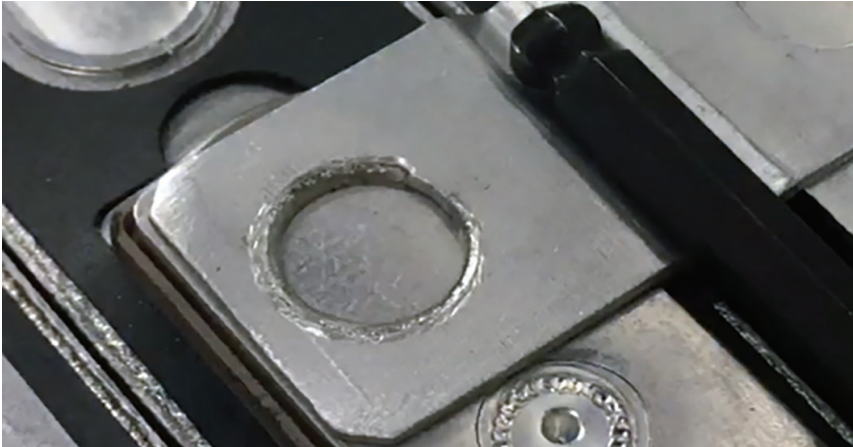
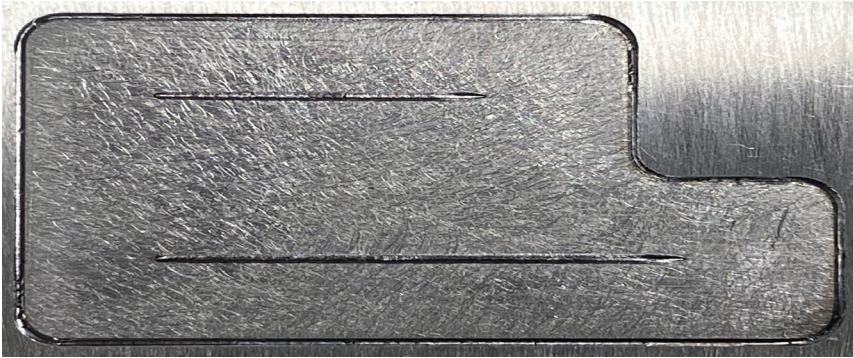
Why Aluminum Is Challenging to Weld

Aluminum's weldability issues stem primarily from four material properties:

1. Low melting point and susceptibility to impurities in its molten state. Aluminum's low melting point (660°C) results in a very short welding window. In its molten state, susceptibility to impurities results in weak, porous welds.

2. High thermal conductivity and expansion. Heat introduced during welding quickly dissipates into the bulk metal, which can reduce joint penetration and make controlling the weld pool difficult. Aluminum expands quickly and cools rapidly, making it prone to solidification cracking.

3. Oxide layer with a high melting point. Aluminum has a great affinity for oxygen and forms a tough oxide layer (aluminum oxide) upon exposure to air. While the base



Typical aluminum welding applications (from top): electronic package, an aluminum tab on a prismatic battery can, and aerospace honeycomb. (Images courtesy AMADA Weld Tech.)

metal melts at around 660°C, this oxide layer melts above 2000°C.

4. Composition. The aluminum material used in manufacturing is usually an alloy composed of multiple elements. Certain aluminum alloys pose welding challenges due to their melting and solidification behavior.

All these factors contribute to porosity, cracking, weak fusion, and

unstable weld pools if not adequately addressed.

General Tips and Tricks for Successful Welding of Aluminum

Before looking at specific technologies, let's consider some general best practices for welding aluminum.

- **Surface cleanliness is critical.** Remove oils, grease, fingerprints, and dirt. These foreign substances can lead to spitting and porosity and, if mixed into the weld pool, can reduce weld strength.
- **Remove surface oxides.** Mechanical brushing, chemical etching, or a quick laser cleaning pass can strip the oxide and improve weld results. Processing after this cleaning should be done within minutes to avoid new oxide growth.
- **Keep parts dry and at room temperature.** Moisture can lead to hydrogen pickup and weld porosity. If parts aren't welded within a few days, repeat the cleaning process.

Choose the Right Alloys

Material selection is key to avoiding volatile alloying elements, which can cause excess porosity and cracking. Because of the small part size and limited access, filler material is rarely used in microwelding and can be difficult to apply. Microwelding is typically done autogenously, meaning the alloy content must be weldable.

Table 1 outlines the weldability of common aluminum alloys.

Proper Weld Joint Design

Weld joint design is a key factor in aluminum welding, and optimized joint configurations are critical for enhancing joint penetration, strength, and repeatability while minimizing weld defects.

- Butt joints provide direct access to the joint interface and promote uniform heat distribution.
- Lap joints are frequently employed for applications like welding thin foils and tabs, where alignment can be achieved with minimal fixturing. It's important to ensure adequate overlap and weld along the edge where the two parts meet. Avoid trapping contaminants between the layers.

Table 1 – The Weldability of Common Aluminum Alloys*

Alloy Class	Primary Alloying Element	General Fusion Weldability – GTAW, RW, and Laser
1XXX**	N/A	Yes
2XXX***	Cu	No (exception of 2219)
3XXX**	Mn	Yes, particularly 3003
4XXX	Si	Not typically used as a base material
5XXX**	Mg	Yes, 5052, 5083, and 5454 are good choices.
6XXX****	Mg, Si	6061 and 6063 should be combined with the 4XXX series for crack-free welding
7XXX***	Zn	No

*Note: These are general guidelines; material combinations should be tested for fitness and purpose for each weld design.

**Typical material selections for autogenous fusion welding are the 1XXX, 3XXX, and 5XXX series. These alloys are generally stable and not prone to solidification cracking or other issues when handled properly.

***The 2XXX and high-strength 7XXX are generally not recommended because they are prone to solidification cracking. There are a few exceptions to this rule. It is a good idea to inspect the alloy and review its known weldability.

****The 6XXX series, especially 6061 and 6063, is prone to solidification cracking. Thus, heat must be carefully considered. A common technique is to add 4047 or 4043 as the second material. This alloy provides silicon content, which lowers the melting temperature and improves fluidity in the weld pool, helping to distribute heat more evenly to create a successful weld.

- T-joint and fillet joint configurations are sometimes used, provided sufficient access for the heat source is available. It's important to maintain part fit-up.

Regardless of joint type, excessive gaps, uneven edges, or inconsistent overlap can lead to incomplete fusion, excessive melt-through, or localized overheating.

Fit-Up Tolerances and Fixturing at the Micro Scale

At the micro scale, precise fit-up and stable fixturing are essential for achieving repeatable weld quality. Dimensional variations that might be acceptable in conventional welding can lead to significant defects in micro-welded assemblies. Because filler material is typically not used at this scale, proper fit-up becomes even more important.

Joint interfaces should be manufactured and aligned to tight tolerances to minimize gaps and ensure consistent contact. Components

must be securely fixtured to prevent movement during welding, as even slight displacement can disrupt energy delivery and compromise weld integrity.

Fixturing materials should also be selected to minimize heat sinking and thermal distortion. In many cases, low-mass or thermally insulating fixtures are preferred to maintain localized heating at the joint interface.

Microwelding Aluminum: Comparing Technologies

Manufacturers have several technology choices for microwelding aluminum, each with its own set of challenges.

Micro GTAW

Micro gas tungsten arc welding (GTAW) technology creates a high temperature (5000°C) plasma arc between a tungsten electrode and

the workpiece, which heats, melts, and fuses the parts.

For aluminum, an alternating current (AC) power supply is typically recommended, as it helps remove the oxide layer before melting the base material. While direct current (DC) power supplies can be used if this is properly addressed, they are less common.

PROS

- Noncontact process
- Employs a “nonconsumable” tungsten electrode
- Produces clean, precise welds with minimal spatter

CONS

- Aluminum’s oxide layer makes it difficult to control with DC controls
- Pulse width of AC controls is generally too wide for microwelding applications
- Creates excess heat that may damage delicate internal components
- Porosity and cracking are issues for susceptible alloys



Different weld joint designs are highlighted.

Resistance Welding

Resistance welding (RW) is a thermo-electric process in which heat is generated at the interface of the parts to be joined by passing an electrical current through them under controlled pressure (force) for a precisely controlled time.

PROS

- RW electrodes apply force to the parts to ensure intimate contact, simplifying tooling requirements
- Budget friendly

CONS

- Electrical and thermal conductivity of aluminum makes it difficult to focus the energy in the desired location
- Aluminum is soft, so the electrode force may lead to deformation at higher forces, or the aluminum may stick to the electrodes during the welding process
- Porosity and cracking are issues for susceptible alloys

Laser Welding

Laser welding units produce a beam of high-intensity light that, when focused into a single spot, provides a concentrated heat source, enabling narrow, deep welds and fast welding speeds.

PROS

- Provides very small heat-affected zones

- Noncontact process with no consumables
- Deep joint penetration with precise energy delivery
- Minimal postweld cleanup is required

CONS

- High power and a small spot size or short pulse duration are required to couple the energy into the material; this high energy density is susceptible to expulsion during the welding process
- Melt-through can be an issue
- Porosity and cracking are issues for susceptible alloys and welding combinations
- Higher capital cost; specialized fixturing and shielding need to be considered

For these welding processes, it's important to use an inert shielding gas (e.g., argon or helium) to reduce atmospheric contamination, protect the weld pool, and improve consistency. In high-precision applications, inert enclosures or gloveboxes may be used to eliminate oxygen and moisture entirely.

Inspect and Postprocess Smartly

Even with careful setup, all aluminum welds should be inspected for signs of porosity, cracking, and incomplete fusion.

Traditionally, inspection is performed postweld and includes visual evaluation, cross-sectional metal-

lography, and nondestructive testing such as dye penetrant or x-ray. When appropriate, light grinding or polishing can improve surface finish without compromising metallurgical integrity.

Welding process monitors provide real-time visibility into the weld, enabling immediate detection of abnormal signals and allowing operators or automated systems to take corrective action.

Conclusion

Microwelding aluminum is a precision challenge that demands an understanding of material behavior, joint design, and surface preparation. By combining careful surface cleaning, correct alloy selection, precise energy tuning, shielding, and good fixturing, one can achieve high-quality, hermetic, and mechanically reliable welds even on challenging alloys.

While micro GTAW and RW still serve some aluminum welding needs, laser welding stands apart for micro applications where speed, minimal heat impact, and repeatability are priorities. Investing the time in preparation and parameter development will pay dividends in weld performance, yield, and downstream reliability. [WJ](#)

MARK L. BOYLE (mark.boyle@amadaweldtech.com), PhD, is the director of product engineering and applications at AMADA WELD TECH, Monrovia, Calif.