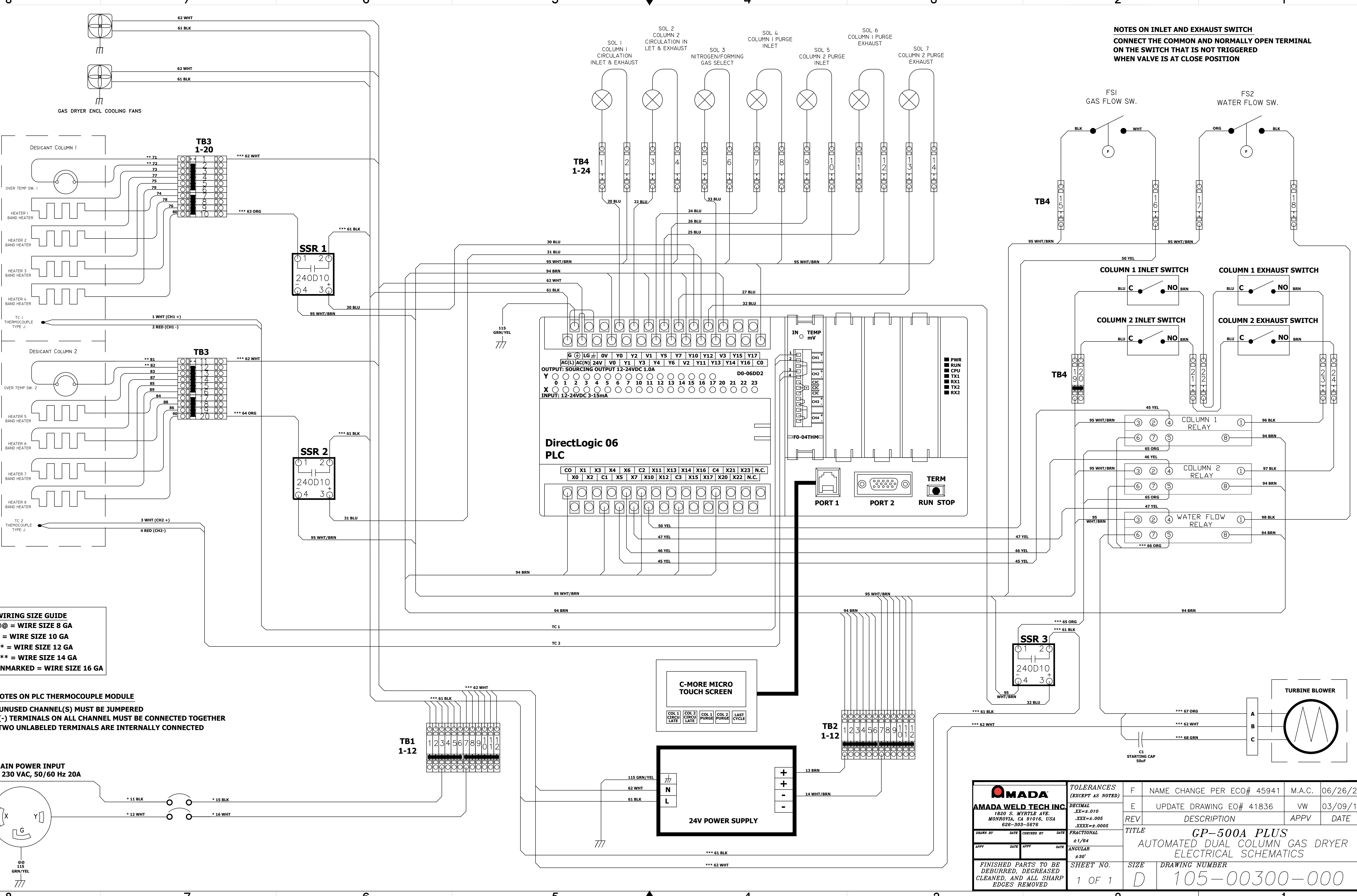
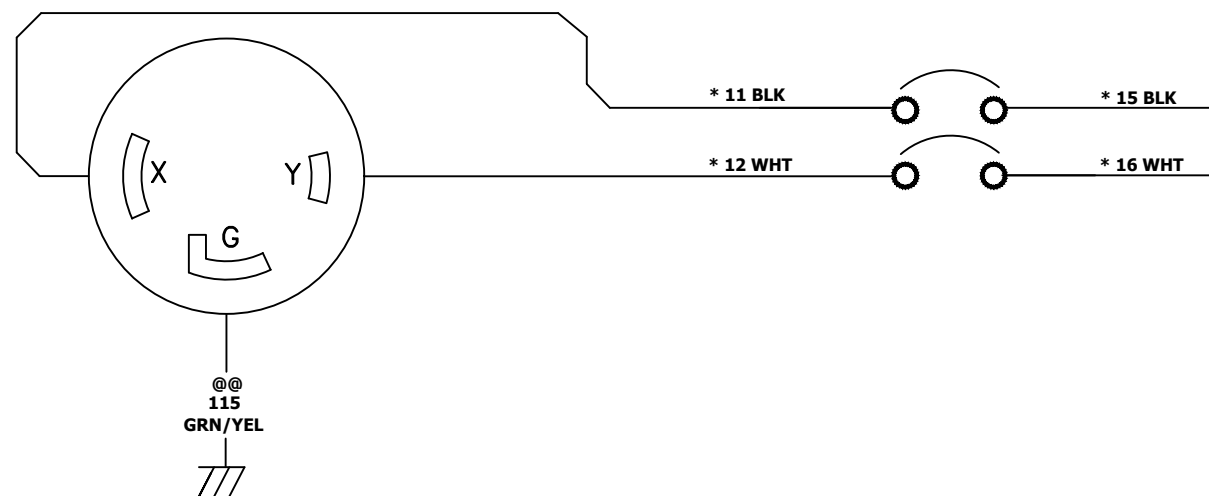


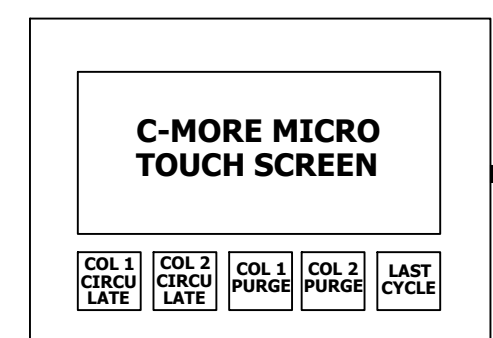
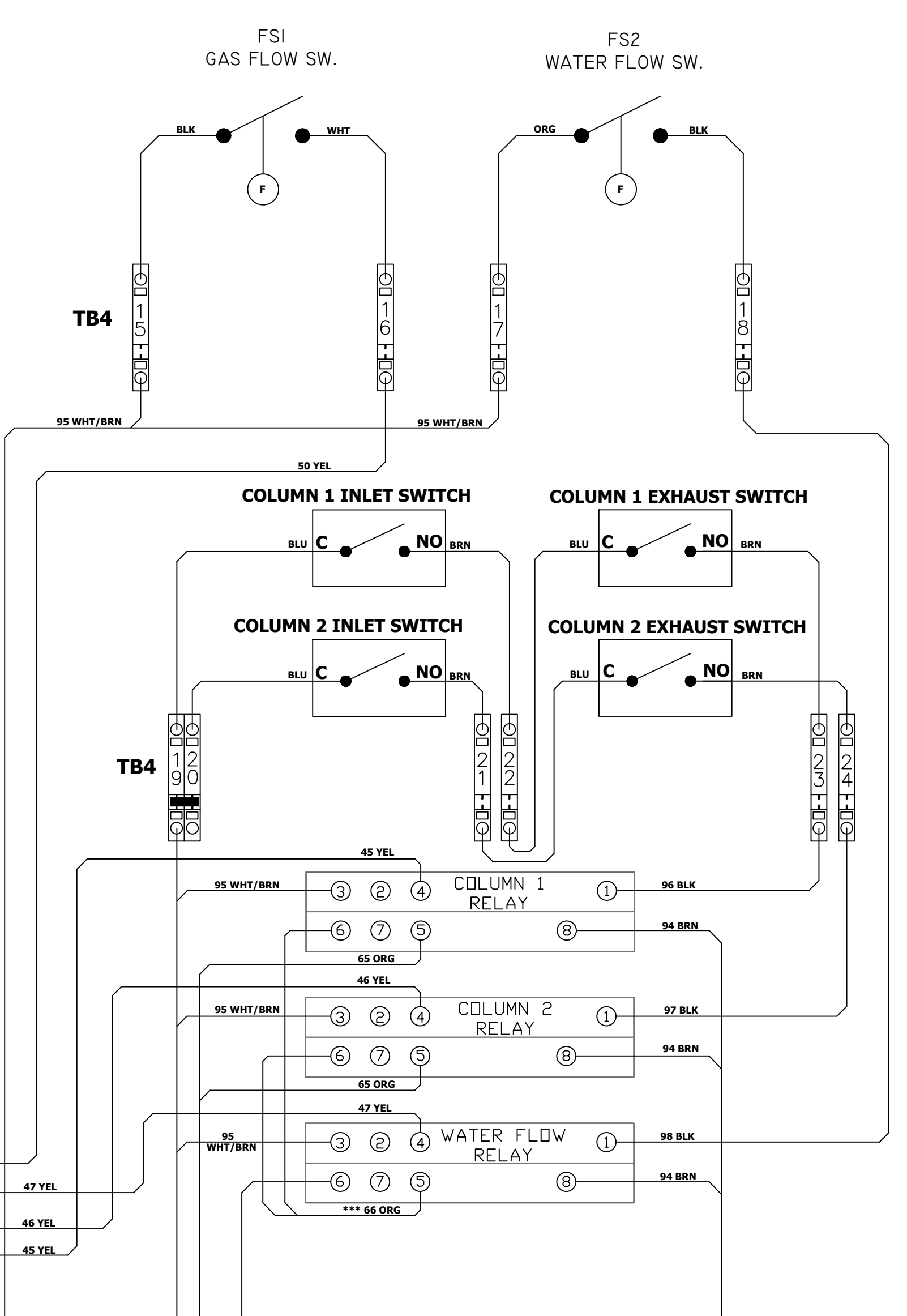
WIRING SIZE GUIDE
 @@ = WIRE SIZE 8 GA
 * = WIRE SIZE 10 GA
 ** = WIRE SIZE 12 GA
 *** = WIRE SIZE 14 GA
 UNMARKED = WIRE SIZE 16 GA

NOTES ON PLC THERMOCOUPLE MODULE
 - UNUSED CHANNEL(S) MUST BE JUMPERED
 - (-) TERMINALS ON ALL CHANNEL MUST BE CONNECTED TOGETHER
 - TWO UNLABELED TERMINALS ARE INTERNALLY CONNECTED

MAIN POWER INPUT
 208 - 230 VAC, 50/60 Hz 20A



NOTES ON INLET AND EXHAUST SWITCH
 CONNECT THE COMMON AND NORMALLY OPEN TERMINAL ON THE SWITCH THAT IS NOT TRIGGERED WHEN VALVE IS AT CLOSE POSITION



AMADA WELD TECH INC. 1820 S. MYRTLE AVE. MONROVIA, CA 91016, USA 626-303-5676		TOLERANCES (EXCEPT AS NOTED) DECIMAL .XX=±.010 .XXX=±.005 .XXXX=±.0005 FRACTIONAL ±1/64 ANGULAR ±30'	F NAME CHANGE PER ECO# 45941 M.A.C. 06/26/20 E UPDATE DRAWING EO# 41836 VW 03/09/12 REV DESCRIPTION APPV DATE TITLE GP-500A PLUS AUTOMATED DUAL COLUMN GAS DRYER ELECTRICAL SCHEMATICS
DRAWN BY DATE CHECKED BY DATE APPV DATE APPV DATE	SHEET NO. 1 OF 1	SIZE D	DRAWING NUMBER 105-00300-000
FINISHED PARTS TO BE DEBURRED, DECREASED CLEANED, AND ALL SHARP EDGES REMOVED			