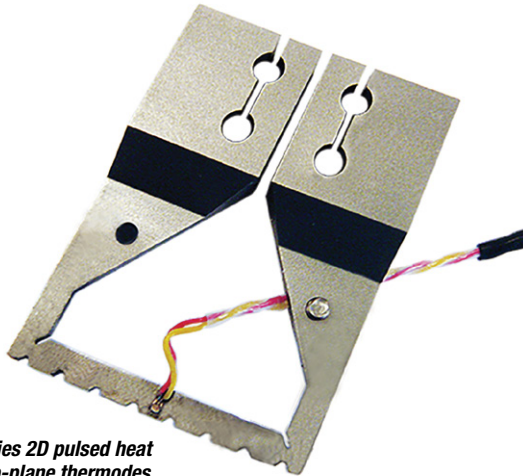


NH Series 3D pulsed heat thermo-plane thermodes



NH Series 2D pulsed heat thermo-plane thermodes

KEY FEATURES

- Robust design for high force applications and perfect bond planarity
- 3D thermodes can also be used for low force applications • Fast heating and forced air cooling for minimum process cycle times
- Thermode adapter block for easy and fast exchange of thermodes without re-adjustment
- 3D design eliminates voltage drop on products

NH Series Pulsed Heat Thermodes

The NH Series thermode design offers ultra-fast heating and cooling cycles, minimizing process times. Forced air-cooling after the heating process further speeds the total bonding process.

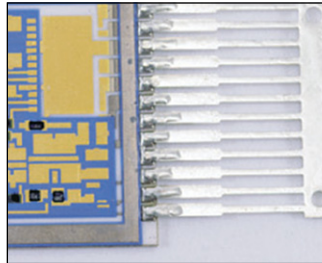
The thermode is designed to maintain co-planarity and withstand deformation resulting from the high forces that may be necessary in some bonding processes.

3D – the current flows from front to back of the thermode and therefore reduces voltage drop.

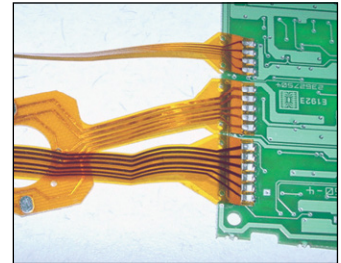
2D – the current flows left to right which can cause voltage drop across the face of the thermode and cause problems with voltage.

Wire soldering, ACF bonding, heat-sealing and heat staking processes require their own specific thermode configurations based on product size, shape and configuration. AMADA WELD TECH offers a full range of standard as well as custom designs.

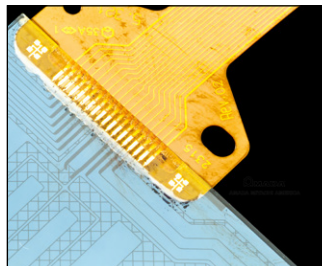
TYPICAL APPLICATIONS



2D thermo-plane thermode application wire soldering



3D thermo-plane thermode application flex soldering



3D thermode application bonding flex to glass



Heat stake thermode application

TECHNICAL SPECIFICATIONS

2D Pulsed Heat Thermode				
Length	Width	Thermode Adapter Block	TC-Type	Specify Thermode for order purpose
5 - 50 mm	1 - 3 mm	ONH5001	K-type	Width x Length (mm) / custom design

3D Pulsed Heat Thermo-plane Thermode				
Length	Width	Thermode Adapter Block	TC-type	Specify Thermode for order purpose
1 - 75 mm	1 - 4 mm	ONH5002	K-type	Width x Length (mm)
Reflow soldering area: 1-300 mm ² bond surface. Taking into account maximum bond force defined by actual bond head (80 - 750 N / 18 - 169 lb)				



USA Headquarters and Western Technical Center

AMADA WELD TECH
 1820 S. Myrtle Ave. • Monrovia, CA 91016 US • T: (626) 303-5676
info@amadaweldtech.com • www.amadaweldtech.com
 ISO 9001 Certified Company • 24/7 Repair Service: 1-866-751-7378

AMERICAS

AMADA WELD TECH
(Eastern Technical Center)
 High Point, North Carolina
 T: (941) 544-5762
southsales@amadaweldtech.com

AMADA WELD TECH
(Midwest Technical Center)
 Detroit, Michigan
 T: (248) 313-3078
midwestsales@amadaweldtech.com

AMADA WELD TECH
(Mexico Office)
 El Paso, Texas
 T: (915) 881-8765
mxsales@amadaweldtech.com

EUROPE
AMADA WELD TECH
GmbH
 Munich, Germany
 T: +49-89-839403-0
infode@amadaweldtech.eu

ASIA

AMADA CO., LTD.
 Isehara, Japan
 T: +81-463-96-3268
sales@miyachi.co.jp

AMADA WELD TECH
SHANGHAI CO., LTD.
 Shanghai, China
 T: +86-21-6448-6000
jwu@amadaweldtech.com.cn

AMADA WELD TECH KOREA CO., LTD.
 Seoul, Korea
 T: +82-31-8015-6810
amadadasales@amadaweldtech.co.kr
sales2@amadaweldtech.co.kr

AMADA WELD TECH TAIWAN CO., LTD.
 Taipei, Taiwan
 T: +886-3-328-3511

AMADA (THAILAND) CO., LTD.
 Bangkok, Thailand
 T: +66-2170-5900
info@amada.co.th

AMADA VIETNAM CO., LTD.
 Ha Noi, Vietnam
 T: +84-4-6261-4583
thuyet@amada.co.jp

AMADA WELD TECH
INDIA PVT., LTD.
 Bangalore, India
 T: +91-80-4092-1749
info@amadaweldtech.in

Specifications subject to change without notice. Copyright© 2024 AMADA WELD TECH INC.
 The material contained herein cannot be reproduced or used in any other way without the
 express written permission of AMADA WELD TECH INC. All rights reserved.

follow us on:

