

NH-2000A

Pulsed Heat Reflow Soldering System



The NH Series Hot Bar Reflow Soldering Systems feature pulsed heat technology, a pneumatic bonding head and customized 2D and 3D thermodes.

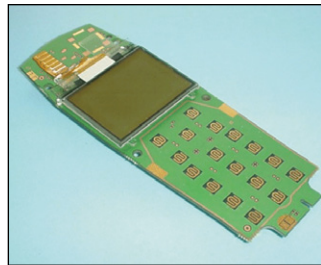
Designed to the highest ergonomic standards, product handling features include either a linear slide or rotary table for optimum production throughput.

Systems can be customized with optional plug & play modules including tape interposers and vision systems mounted on a robust frame.

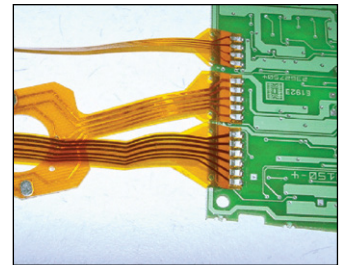
KEY FEATURES

- Compact, flexible standard systems
- User-friendly system configuration with optional plug & play modules
- UF-4000A Pulsed Heat Power Supply
- X-Y thermode planarity adjustment
- Electronic system control
- Digital bond force readout
- Active integrated cooling
- CE approved

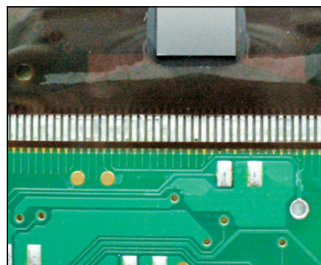
TYPICAL APPLICATIONS



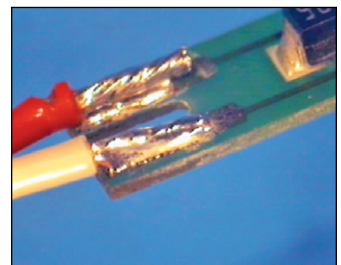
Flex soldering



Multiple flex bonding



Flex bonding



Wire soldering

TECHNICAL SPECIFICATIONS

Power requirements	100-240 VAC / single phase / 50/60 Hz (16 Amps max)
Air supply	6 – 8 bar [87 – 116 psi], clean, dry and filtered air
Fixture assembly baseplate dimensions	5.9 in x 5.9 in (150 mm x 150 mm)
Fixture weight	1.0 kg max (per product fixture)
Thermode size (length x width)	[2D / 3D configuration] [2D: up to 50.0 x 3.0 mm] [3D: up to 75.0 x 4.0 mm]
Starting operation	Two hand control
Operating temperature	15 – 40° C
Operating humidity	Max 93% @ 40° C
Certification	CE approved

BONDING HEAD & UF-4000A* TECHNICAL SPECIFICATIONS

Force range	8 – 80 N @ 6 bar / 60 – 750 N @ 6 bar		
Bond Head stroke (max)	1.77 in (45 mm)		
Bond level height	1.57 in (40 mm)		
Free Z space for components	0.78 in (20 mm)		
Temperature range			
Idle	25 to 300° C	Heat	60 to 600° C
Baseheat	25 to 300° C	Heat extended range	60 to 999° C
Preheat	60 to 500° C	Postheat	25 to 999° C
Time period (in 0.1 sec increments)			
Base Heat	0 to 99.9 seconds	Rise to heat time	0 to 9.9 seconds
Rise to Preheat Time	0 to 9.9 seconds	Heat	0.1 to 99.9 seconds
Preheat	0 to 99.9 seconds or continuous	Postheat	0 to 99.9 seconds
Communication ports	RS-232, RS-485		

*For additional specifications, please review the UF-4000A technical datasheet

MODEL SPECIFICATIONS

NH-2111A Base	No movement
NH-2211A Linear Slide (manual 2-position front-rear slide)	Stroke between front and bonding position: 7.87 in (200 mm) fixed
NH-2311A Rotary Table (manual 2-position)	Turntable diameter: 380 mm
NH-2411A Automatic Rotary Table (pneumatic 2-position)	Turntable diameter: 14.96 in (380 mm) Turntable movement time: < 2 seconds

WEIGHT & DIMENSIONS

Dimensions (W x D x H)*	24.21 in x 27.36 in x 25.59 in (615 mm x 695 mm x 650 mm)
Weight*	132.27 lb (60 kg)

*Excluding power supply



USA Headquarters and Western Technical Center

AMADA WELD TECH
1820 S. Myrtle Ave. • Monrovia, CA 91016 US • T: (626) 303-5676
info@amadaweldtech.com • www.amadaweldtech.com
ISO 9001 Certified Company • 24/7 Repair Service: 1-866-751-7378

AMERICAS

AMADA WELD TECH
(Eastern Technical Center)
High Point, North Carolina
T: (941) 544-5762
southsales@amadaweldtech.com

AMADA WELD TECH
(Midwest Technical Center)
Detroit, Michigan
T: (248) 313-3078
midwestsales@amadaweldtech.com

AMADA WELD TECH
(Mexico Office)
El Paso, Texas
T: (915) 881-8765
mxsales@amadaweldtech.com

EUROPE
AMADA WELD TECH
GmbH
Munich, Germany
T: +49-89-839403-0
infode@amadaweldtech.eu

ASIA

AMADA CO., LTD.
Isehara, Japan
T: +81-463-96-3268
sales@miyachi.co.jp

AMADA WELD TECH
SHANGHAI CO., LTD.
Shanghai, China
T: +86-21-6448-6000
jwu@amadaweldtech.com.cn

AMADA WELD TECH KOREA CO., LTD.
Seoul, Korea
T: +82-31-8015-6810
amadasales@amadaweldtech.co.kr
sales2@amadaweldtech.co.kr

AMADA WELD TECH TAIWAN CO., LTD.
Taipei, Taiwan
T: +886-3-328-3511

AMADA (THAILAND) CO., LTD.
Bangkok, Thailand
T: +66-2170-5900
info@amada.co.th

AMADA VIETNAM CO., LTD.
Ha Noi, Vietnam
T: +84-4-6261-4583
thuyet@amada.co.jp

AMADA WELD TECH
INDIA PVT., LTD.
Bangalore, India
T: +91-80-4092-1749
info@amadaweldtech.in

Specifications subject to change without notice. Copyright© 2024 AMADA WELD TECH INC.
The material contained herein cannot be reproduced or used in any other way without the
express written permission of AMADA WELD TECH INC. All rights reserved.

follow us on:

