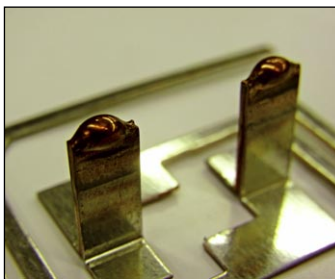


Micro TIG Accessories

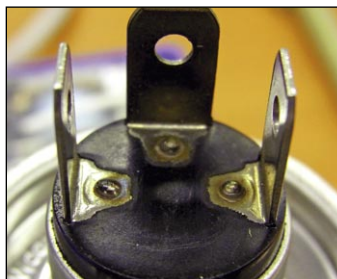


- Safety
- Torches and electrodes
- Stand and tooling
- Gas handling
- Cables

TYPICAL APPLICATIONS



Bus bars



Tab welding



Wire to bus bar

SAFETY

TIG welding generates an intense arc of light - some of which is in the ultraviolet spectrum - and proper safety is important to protect eyes and skin from damage. In addition, parts and tooling may be hot after welding and must be handled carefully.

To protect eyes and skin, AMADA WELD TECH recommends wearing both a welding helmet and gloves.



Welding helmet with auto-darkening (shade 13) glass.



Item	Part Number
Welding helmet	900-383 (blaze)
	900-384 (black)
Welding gloves	090-024 (Medium)
	090-025 (Large)
	090-026 (X-Large)

TORCHES AND ELECTRODES

In addition to a power supply like the MAWA-300B, TIG welding requires both torches and electrodes. Proper selection of these items can help ensure successful welding. Furthermore, because electrodes wear down over time, they must be periodically sharpened.



TORCH

Torches may be air or water cooled

Item	Part Number
Torch – air cooled, 1/16" electrode, 3/8" nozzle includes part number 010-019 1/16" 2% lanthanated tungsten electrodes	10-600-01
Torch – air cooled, 3/32" electrode, 3/8" nozzle includes part number 010-020, 3/32" 2% lanthanated tungsten electrodes	10-601-01

ELECTRODES

Replacement tungsten electrodes

Item	Part Number
Electrode 2% lanthanated tungsten 1/16" x 7" (pack of 10)	010-019
Electrodes, 2% lanthanated 3/32" x 7" (pack of 10)	010-020



ELECTRODE GRINDER



Item	Part Number
Portable electrode grinder	701-077

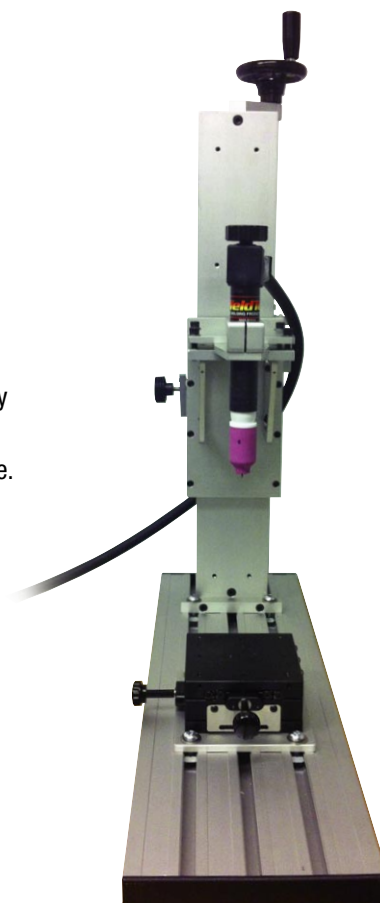
STAND AND TOOLING

Precision welding, requires a sturdy stand and excellent positioning. AMADA WELD TECH's stand mounts the torch on a manual (or optionally motorized) z-axis. The base features t-slots for easy part positioning.

Add an X-Y stage for precision parts positioning relative to the electrode. The stages have a full travel range of 1" x 1".

Item	Part Number
Stand, manual Z	701-078
Stand, motorized Z*	10-611-01
XY unit, 1" travel	524-043
Adapter Plate	701-079

*Note: Touch start requires motorized stand.



GAS HANDLING

Arc welding must be generated in an inert environment. Typical gases used are argon and helium. AMADA WELD TECH recommends the following tubing and regulators for use with the MAWA-300B power supply:

REGULATOR

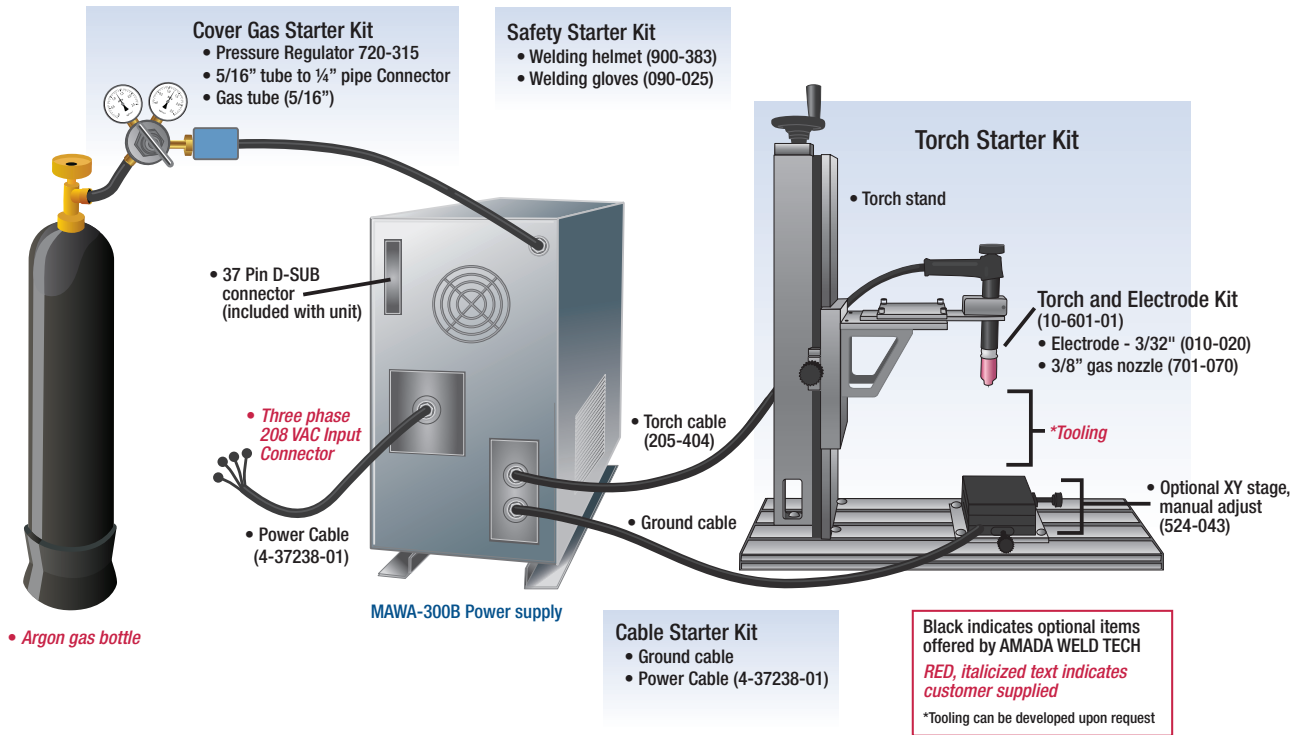
Item	Part Number
Regulator	720-315
Tubing, 5/16" OD, 25 ft long	050-267
Connector 5/16" OD tubing to 1/4" pipe	325-433



CABLES

Cables and components required for operating MAWA-300B.

Item	Part Number
Power cable (10 ft)	4-37238-01
Grounding cable (3 meters)	MB0909181-3



MICRO TIG STARTER KITS

Item	Description	Part Number
Micro TIG torch starter kit, 1/16"	Torch kit includes air cooled torch, 1/16" 2% lanthanum tungsten electrodes, 3/8" gas nozzle	10-600-01
Micro TIG torch starter kit, 3/32"	Torch kit includes air cooled torch, 3/32" 2% lanthanum tungsten electrodes, 3/8" gas nozzle	10-601-01
Micro TIG torch stand	Torch stand includes manual z axis and t-slot base for part and tool mounting	10-611-01
Micro TIG cover gas starter kit	Gas connector kit includes - gas regulator, connector for 5/16" quick connect to 1/4" piping, 5/16" tubing	10-620-01
Micro TIG cable starter kit	Cable Starter Kit includes grounding cable, power cable	10-630-01
Micro TIG safety starter kit	Micro TIG safety starter kit includes welding helmet with auto-darkening glass - color black, welding gloves	10-650-01



USA Headquarters and Western Technical Center
AMADA WELD TECH
 1820 S. Myrtle Ave. • Monrovia, CA 91016 US • T: (626) 303-5676
info@amadaweldtech.com • www.amadaweldtech.com
 ISO 9001 Certified Company • 24/7 Repair Service: 1-866-751-7378

AMERICAS

AMADA WELD TECH (Eastern Technical Center)
 High Point, North Carolina
 T: (941) 544-5762
southsales@amadaweldtech.com

AMADA WELD TECH (Midwest Technical Center)
 Detroit, Michigan
 T: (248) 313-3078
midwestsales@amadaweldtech.com

AMADA WELD TECH (Mexico Office)
 El Paso, Texas
 T: (915) 881-8765
mexsales@amadaweldtech.com

EUROPE
AMADA WELD TECH GmbH
 Munich, Germany
 T: +49-89-839403-0
infode@amadaweldtech.eu

ASIA

AMADA CO., LTD.
 Isehara, Japan
 T: +81-463-96-3268
sales@miyachi.co.jp

AMADA WELD TECH SHANGHAI CO., LTD.
 Shanghai, China
 T: +86-21-6448-6000
jwu@amadaweldtech.com.cn

AMADA WELD TECH KOREA CO., LTD.
 Seoul, Korea
 T: +82-31-8015-6810
amadasales@amadaweldtech.co.kr
sales2@amadaweldtech.co.kr

AMADA WELD TECH TAIWAN CO., LTD.
 Taipei, Taiwan
 T: +886-3-328-3511

AMADA (THAILAND) CO., LTD.
 Bangkok, Thailand
 T: +66-2170-5900
info@amada.co.th

AMADA VIETNAM CO., LTD.
 Ha Noi, Vietnam
 T: +84-4-6261-4583
thuyet@amada.co.jp

AMADA WELD TECH INDIA PVT., LTD.
 Bangalore, India
 T: +91-80-4092-1749
info@amadaweldtech.in

Specifications subject to change without notice. Copyright© 2024 AMADA WELD TECH INC. The material contained herein cannot be reproduced or used in any other way without the express written permission of AMADA WELD TECH INC. All rights reserved.



follow us on: