



3-position rotary dial index system

Rotary Dial Index Systems

Designed to improve the efficiency and throughput of a multi-step manufacturing process, rotary dial index systems assist in organizing steps and eliminating operator handling between steps.

AMADA WELD TECH specializes in building custom systems where either a single operator or robot is tasked with loading materials and unloading finished product.

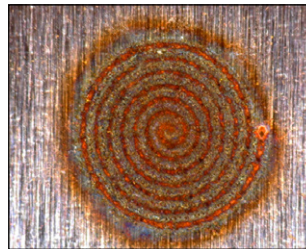
SYSTEM OPTIONS

- Pneumatic or motorized indexer
- Stage motion options: X, Y, Z, Rotary for part manipulation
- Galvo scanhead option for quick point-to-point positioning
- Controller options: AB PLC, DeltaTau® or MarkerMotion®
- Connectivity to production networks: (ERP, MRP systems)
- System process options: marking, engraving, welding, ablation
- Adjustable height base for optimal operator ergonomics

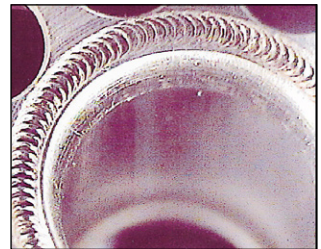
KEY FEATURES

- Multiple positions tailored to the manufacturing process to improve throughput
- Decrease cycle time in continuous production by performing steps in parallel
- Single operator or robot load/unload of product
- Small footprint for lean manufacturing
- Light tight laser processing area meets CDRH class 1 safety standards
- Viewport and camera enables operator process monitoring
- Optional real-time laser weld monitoring to inspect the weld and ensure quality, throughput and traceability

TYPICAL APPLICATIONS



Battery tab welding



Automotive part welding

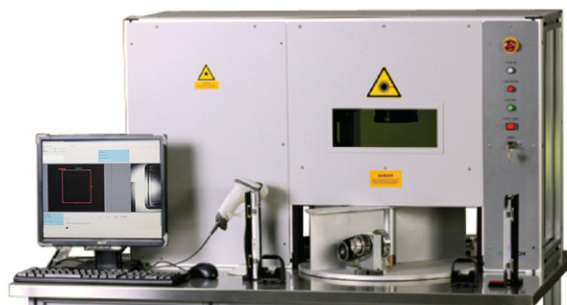
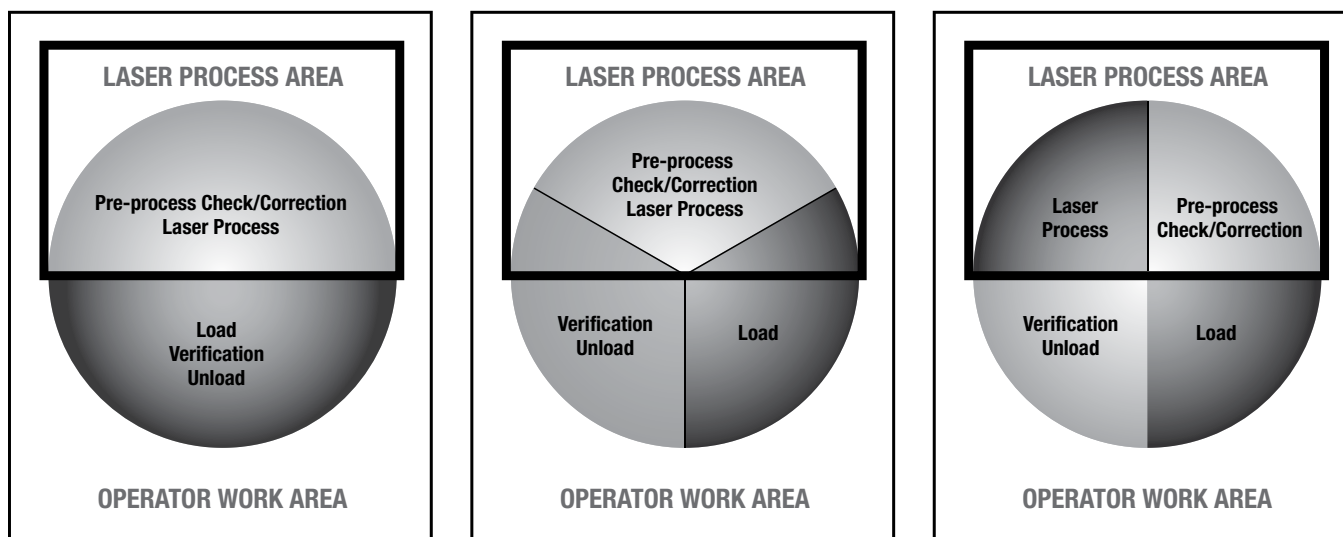


Medical component marking



Aerospace component marking

Examples of multiple positions (left to right): 2-position, 3-position, 4-position



Example: 2-position dial index system for laser marking

Integration options

- Part in place sensor to initiate cycle
- Barcode imager
- Custom user interface
- Part-specific tooling
- Machine vision correction/verification

Safety

- Complies with IEC 13849-1 Category 3
- Acrylic guarding with light curtains to prevent pinch points
- Dual opto anti-tie down switches to initiate cycle
- Light tight process area – adheres to CDRH Class 1

TECHNICAL SPECIFICATIONS

# of Positions	2, 3, or 4
Electrical - Workstation	100-240 VAC, 50-60 Hz, 10A
Dimensions (L x W x H) (typical 3-position workstation)	35.5 in x 35.5 in x 62.8 in (901.7 mm x 901.7 mm x 1595.1 mm)

**AMADA WELD TECH INC.**

1820 S. Myrtle Ave. • Monrovia, CA 91016 US
 T: (626) 303-5676
info@amadaweldtech.com • www.amadaweldtech.com
 ISO 9001 Certified Company • 24/7 Repair Service: 1-866-751-7378

AMERICAS

AMADA WELD TECH
 (Midwest Technical Center)
 Detroit, Michigan
 T: (248) 313-3078
midwestsales@amadaweldtech.com

AMADA WELD TECH
 (Mexico Office)
 El Paso, Texas
 T: (915) 881-8765
mxsales@amadaweldtech.com

EUROPE

AMADA WELD TECH
 GmbH
 Munich, Germany
 T: +49-89-839403-0
info@amadaweldtech.eu

ASIA

AMADA WELD TECH CO., LTD.
 Isehara, Japan
 T: +81-4-7125-6177
sales@miyachi.com

AMADA WELD TECH
SHANGHAI CO., LTD.
 Shanghai, China
 T: +86-21-6448-6000
jwu@msc.miyachi.com

AMADA WELD TECH KOREA CO., LTD.
 Seoul, Korea
 T: +82-31-8015-6810
sales@amadaweldtech.co.kr

AMADA WELD TECH TAIWAN CO., LTD.
 Taipei, Taiwan
 T: +886-2-2585-0161

AMADA (THAILAND) CO., LTD.
 Bangkok, Thailand
 T: +66-2170-5900
info@amada.co.th

AMADA VIETNAM CO., LTD.
 Ha Noi, Vietnam
 T: +84-4-6261-4583

AMADA WELD TECH
INDIA PVT., LTD.
 Bangalore, India
 T: +91-80-4092-1749
info@miyachiindia.com

Specifications subject to change without notice. Copyright© 2020 AMADA WELD TECH INC. The material contained herein cannot be reproduced or used in any other way without the express written permission of AMADA WELD TECH INC. All rights reserved.

follow us on:



09/20