



Premium MG3 Hot Bar Monitoring System

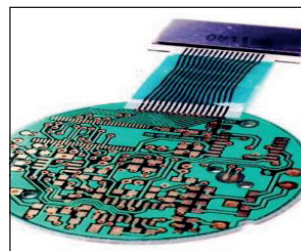
The process monitoring device MG3 Hot Bar offers full process and quality control during production.

Provides all relevant measurement information such as force, temperature, time and displacement increase transparency and allow for continuous control throughout the entire process cycle. Compact and flexible system delivers high quality Hot Bar connections. Ideal price-performance ratio, high throughput, easily adjustable frame construction. Designed for multiple technologies like Heat-Seal bonding, Hot Bar Reflow Soldering, Heat Staking. Interacts with reliable process control, by proven technology of Uniflow Power Supply.

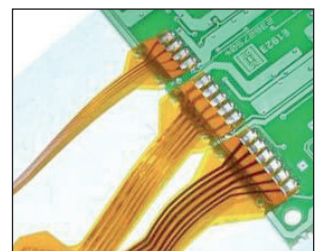
KEY FEATURES

- Premium Hot Bar Monitor designed to control Hot Bar Bonding processes reliably, efficiently and conveniently
- Dual channel capability offers simultaneous monitoring
- Configurable graphic user interface with 4 display quadrants, graphic and numeric indicators as well as intuitive online help gives maximum transparency for all relevant parameters
- Full on-screen SPC capability generates real time monitoring
- Up to 99 available schedules provides max. control with password protection
- Modern interface infrastructure with RS232 or Ethernet TCP/IP
- Bond interrupt functions enable the operator to steer the bond process
- Convenient and safe data storage and data transfer with USB port

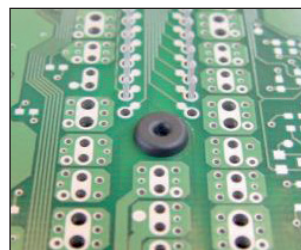
TYPICAL APPLICATIONS



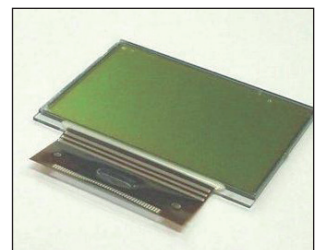
Heat-Seal Bonding



Hot Bar Reflow Soldering



Heat Staking



ACF Bonding



PRODUCT OVERVIEW MG3 HOT BAR

The Monitor Device MG3 Hot Bar-W2 can monitor temperature, force and pressure and calculates its derived parameters with dual channel capabilities. It has the option to buy two measuring sensors and then monitors displacement, temperature and force.

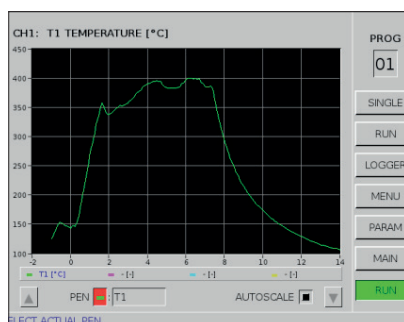
	Hot Bar-W2
Thermode cycle	K and J
Configuration	Thermode cycle K and J parallel with external BCD program selection, turn pressure knob for menu selection and parameter input, analog inputs force & pressure, optional: 2 displacement measuring sensors digital with 1 μm resolution
Measuring functions	Temperature and time pre-warning and limit values, envelope waveform function, counter, statistic process control (detected values unreadable as limit values),
Options	Displacement, advanced settings, parts detection, speed, pressure and force, 2 sensors
Supply voltage	90 – 260 V AC
Main frequency	50 - 60 Hz
Connected rating	60 W
Fusing	Internal 2 A delayed
Connecting cable	3 x 0,75 mm ² , 2 m long
Protection class	IP30
Graphic display	120 x 90 mm
Graphic scan	10 points/ms
Storage	USB Port
Temp and force	25 degrees Celsius up to 600 degrees Celsius, 8 to 2500 N
Monitoring programs	99
Measuring times	0 to 60 seconds
Scan-rate	100 ms per channel
Analogue input	Temperature, Force and Displacement
Digital input	15-p. D-SUB male connector, BCD; 5-p, D-SUB male connector
Digital output	15-p. D-SUB male connector, BCD; 25-p, D-SUB male connector
Digital interface	Digital I/O, RS232, Ethernet TCP/IP and USB port are standard CANOpen, Profibus or Ethernet/IP are optional features
Serial interface RS232	Output of measuring values in ASCII compatible printer format
Environment temperature	0 – 40 °C
Force measuring range	8 to 2500 N (depending on bond head)
Displacement measuring range / accuracy	0 – 12,5 mm/ +/- 2 μm with sensor 1 μm
Displacement measured value Resolution	According to sensor type 1 to 0.1 μm digital
Weight approx.	5,4 kg
Dimensions (L x H x D)	240 x 135 x 320 mm
Certification	CE

KEY FEATURES HOT BAR MODULES

The MIYACHI EAPRO Hot Bar Modules are an integrated part of the Hot Bar product line and available for all standard and customized Hot Bar systems as well as for module integration through system integrators. The Uniflow-4 Pulsed Heat temperature controller and MIYACHI EAPRO Bond Heads can be used in combination with the MG3 Hot Bar to control and verify Hot Bar processes.

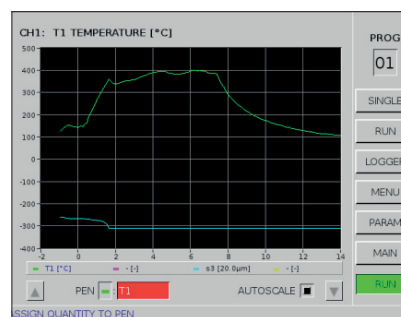
TECHNICAL SPECIFICATIONS

Bonding Head & Uniflow Technical Specifications			
Force range		BH 2500: 20 to 2500 N - SH 1250: 250 to 1250 N - SH 500: 50 to 500 N - SH 80: 8 to 80 N	
Hot Bar stroke		50 mm	
Temperature range			
Idle	25 to 100 °C	Heat	60 to 600 °C
Baseheat	25 to 300 °C	Heat Extended Range	60 to 999 °C
Preheat	60 to 300 °C	Postheat	25 to 600 °C
Time period (in 0.1 sec increments)			
Base Heat	0 to 99,9 seconds	Rise to Heat Time Heat Postheat	0 to 9,9 seconds
Rise to Preheat Time	0 to 9,9 seconds		0,1 to 99,9 seconds
Preheat	0 to 99,9 seconds or continuous		0 to 99,9 seconds
Communication ports		RS-232, RS-485	
For additional specifications, please review the Uniflow-4 Datasheet and the Bonding Head Datasheet			



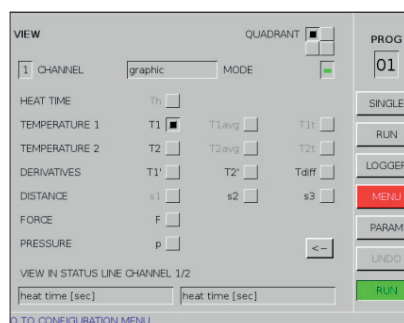
Temperature Graph

Graph showing real time temperature profile during Hot Bar process cycle



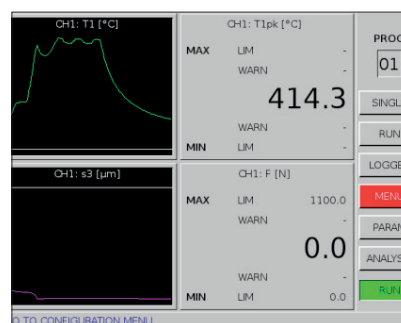
Temperature & Displacement Graph

Graph showing real time temperature profile with thermode displacement measured during Hot Bar process cycle



User Interface

Interface screen for configuration



User Interface

Interface screen with multiple display quadrants and graphics



Lindberghstrasse 1 • DE-82178 Puchheim, Germany
T: +49 (0) 89 83 94 030 • Fax: +49 (0) 89 839403 68
info@amadamiyachi.eu • www.amadamiyachieurope.com
ISO 9001 Certified Company

EUROPE

Amada Miyachi Europe BV
Helmond, The Netherlands
T: +31 (0) 492 542 225
info@amadamiyachi.eu

Amada Miyachi Europe Kft.
Budapest, Hungary
T: +36 1 431 9927
info@amadamiyachi.eu

Amada Miyachi Europe
Derby, United Kingdom
T: +44 (0) 1332 361 238
info@amadamiyachi.eu

Amada Miyachi Europe
Saint Germain en Laye, France
T: +33 (0) 139 046 430
info@amadamiyachi.eu

Amada Miyachi Europe
Torino, Italy
T: +39 011 223 83 16
info@amadamiyachi.eu

Amada Miyachi Europe
Prague-West, Czech Republic
T: +420 251 512 157
info@amadamiyachi.eu

AMERICAS

Amada Miyachi America Inc.
Monrovia, CA, USA
T: +1-626-303-5676
info@amadamiyachi.com

Amada Miyachi do Brasil Ltda.
Sao Paulo, Brasil
T: +55-11-4193-1187
antonio.ruiz@miyachi.com

ASIA

Amada Miyachi Co., Ltd.
Noda, Japan
T: +81-4-7125-6177
sales@miyachi.com

Amada Miyachi Shanghai, Co., Ltd.
Shanghai, China
T: +86-21-6448-6000
zqzhang@msc.miyachi.com

MIYACHI
UNITEK

MIYACHI
PEGO

MIYACHI
EAPRO

Amada Miyachi Korea Co., Ltd.
Gyeonggi-do, Korea
T: +82-31-8015-6810
dykim@mkc.miyachi.com

Amada Miyachi Taiwan Co., Ltd.
Taipei, Taiwan R.O.C.
T: 886-2-2397-4778
keigaku@miyachi.com

Amada Miyachi (Thailand) Co., Ltd.
Samutprakarn, Thailand
T: +66-2751-9337-8
info@mtl.miyachi.com

Amada Miyachi Vietnam Co., Ltd.
Ho Chi Minh City, Vietnam
T: +84-8-3771-7972

Amada Miyachi India Pvt., Ltd.
Bangalore, Karnataka
info@miyachiindia.com

follow us on:



All data, images and text are subject to change at any time. Amada Miyachi Europe GmbH reserves the right to change, modify, delete and add technical specifications and product details at any time without prior notification. © 2015 Amada Miyachi Europe GmbH.