



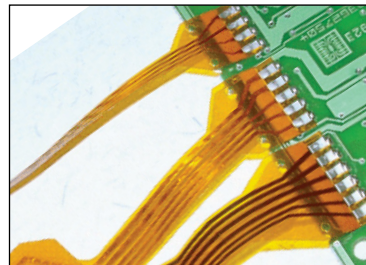
DT Series Pulsed Heat Hot Bar Systems

The AMADA WELD TECH DT Series utilizes pulsed heat technology (UF-4000A), the SH-080A or the SH-500A pneumatic bonding head and standard quick connect blocks with thermo-plane thermodes. All modules are mounted on a sturdy and easily adjustable frame construction. The DT Series includes different product handling features like left-right and front-rear slides as well as rotary tables. All systems are designed considering ergonomic standards. Optional components for the DT Series include optical alignment modules, Sarcon® & Kapton® interposer modules and customized product tooling.

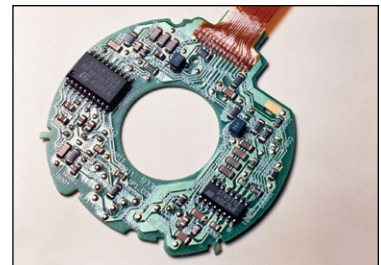
KEY FEATURES

- Small and flexible systems for high quality connections
- Ideal price-performance ratio
- Simple adjustable frame construction
- For heat-seal bonding, hot bar reflow soldering and heat staking
- Reliable process control UF-4000A power supply

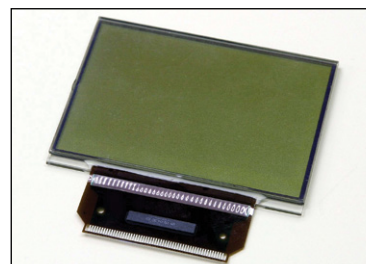
TYPICAL APPLICATIONS



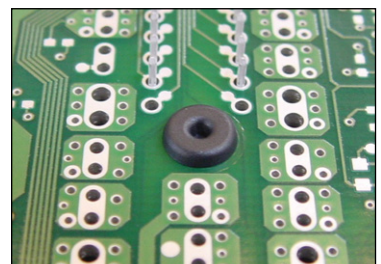
Hot bar reflow soldering



Heat-seal bonding



ACF bonding



Heat staking

TECHNICAL SPECIFICATIONS

Power requirements	100 to 240 VAC, 50/60 Hz, 16 Amp max
Air supply	4 - 8 bar [60 -120 psi] dry & filtered air
Maximum fixture height	50 mm [1.97 in]
Gantry open width	520 mm [20.47 in]
Fixture assembly baseplate	160 x 160 mm [6.30 x 6.30 in]
Starting operation	Two hand control
Operating temperature	15-40° C
Operating humidity	93% @ 40° C

BONDING HEAD & UF-4000A TECHNICAL SPECIFICATIONS

Force range	SH-500A: 50 - 500 N @ 6 Bar SH-080A: 8 - 80 N @ 6 bar		
Hot Bar stroke	SH-500A: 50.0 mm SH-080A: 50.0 mm		
Temperature range			
Idle	25 to 100° C	Heat	60 to 600° C
Baseheat	25 to 300° C	Heat Extended Range	60 to 999° C
Preheat	60 to 300° C	Postheat	25 to 600° C
Time period (in 0.1 sec increments)			
Base Heat	0 to 99.9 seconds	Rise to Heat Time	0 to 9.9 seconds
Rise to Preheat Time	0 to 9.9 seconds	Heat	0.1 to 99.9 seconds
Preheat	0 to 99.9 seconds or continuous	Postheat	0 to 99.9 seconds
Communication ports	RS-232, RS-485		

For additional specifications, please review the UF-4000A Datasheet and the Bonding Head Datasheet

PRODUCT SPECIFICATIONS

Desktop DT-150A	No movement
Desktop DT-250A (manual 2-position front-rear slide)	Stroke between front and bonding position: 200 mm fixed
Desktop DT-260A (manual 3-position front-rear slide)	Stroke between first and second bonding position: 0-50 mm
Desktop DT-270A (manual 2-position left-right slide)	Stroke between left and right bonding position: 180 mm fixed
Desktop DT-350A (pneumatic linear slide, 2-positions front/rear)	Stroke between first and second bonding position: 0-50 mm
Desktop DT-360A (pneumatic linear slide, 3-positions front/rear)	Stroke between front and bonding position: 200 mm fixed
Desktop DT-370A (pneumatic linear slide, 2-positions left/right)	Stroke between left and right bonding position: 180 mm fixed
Desktop DT-440A (manual 2-position turntable)	Turntable diameter: 380 mm
Desktop DT-450A (automatic 2-position turntable)	Turntable diameter: 380 mm / turntable movement time: < 2 seconds

WEIGHT & DIMENSIONS

Dimensions (L x W x H)	23.62 in x 21.65 in x 20.07 in (600 mm x 550 mm x 510 mm)
Weight	88.18 lb (40 kg) excluding UF-4000A power supply



AMADA WELD TECH INC.

1820 S. Myrtle Ave. • Monrovia, CA 91016 US
T: (626) 303-5676
info@amadaweldtech.com • www.amadaweldtech.com
ISO 9001 Certified Company • 24/7 Repair Service: 1-866-751-7378

AMERICAS

AMADA WELD TECH
(Midwest Technical Center)
Detroit, Michigan
T: (248) 313-3078
midwestsales@amadaweldtech.com

AMADA WELD TECH
(Mexico Office)
El Paso, Texas
T: (915) 881-8765
mxsales@amadaweldtech.com

EUROPE

AMADA WELD TECH
GmbH
Munich, Germany
T: +49-89-839403-0
info@amadaweldtech.eu

ASIA

AMADA WELD TECH CO., LTD.
Isehara, Japan
T: +81-4-7125-6177
sales@miyachi.com

AMADA WELD TECH
SHANGHAI CO., LTD.
Shanghai, China
T: +86-21-6448-6000
jwu@msc.miyachi.com

AMADA WELD TECH KOREA CO., LTD.
Seoul, Korea
T: +82-31-8015-6810
sales@amadaweldtech.co.kr

AMADA WELD TECH TAIWAN CO., LTD.
Taipei, Taiwan
T: +886-2-2585-0161

AMADA (THAILAND) CO., LTD.
Bangkok, Thailand
T: +66-2170-5900
info@amada.co.th

AMADA VIETNAM CO., LTD.
Ha Noi, Vietnam
T: +84-4-6261-4583

AMADA WELD TECH
INDIA PVT., LTD.
Bangalore, India
T: +91-80-4092-1749
info@miyachiindia.com

Specifications subject to change without notice. Copyright© 2021 AMADA WELD TECH INC. The material contained herein cannot be reproduced or used in any other way without the express written permission of AMADA WELD TECH INC. All rights reserved.

follow us on:

