

FP190-Z, FP200-Z Weld Pincers

Thanks to their floating bearing with locking cylinder, their outstanding follow-up properties and their short welding times the FP-series weld pincers are designed for a wide range of resistance welding applications.

The weld pincer FP-series is designed for welding of materials which require accurate, reliable and reproducible welds continuously.

Both weld pincers deliver outstanding weld process stability and consistent reproducibility

Maximum reliability and ease of maintenance generate an outstanding cost of ownership and a very long product life in operation.

CONFIGURATION OPTIONS

The FP190-Z and FP200-Z weld pincers are designed to be used in combination with a wide range of power supplies. For more information please consult the Technical Data Sheet of the respective product.

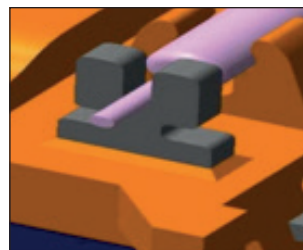
TYPICAL APPLICATIONS



Connector



Weld coil



Electronics



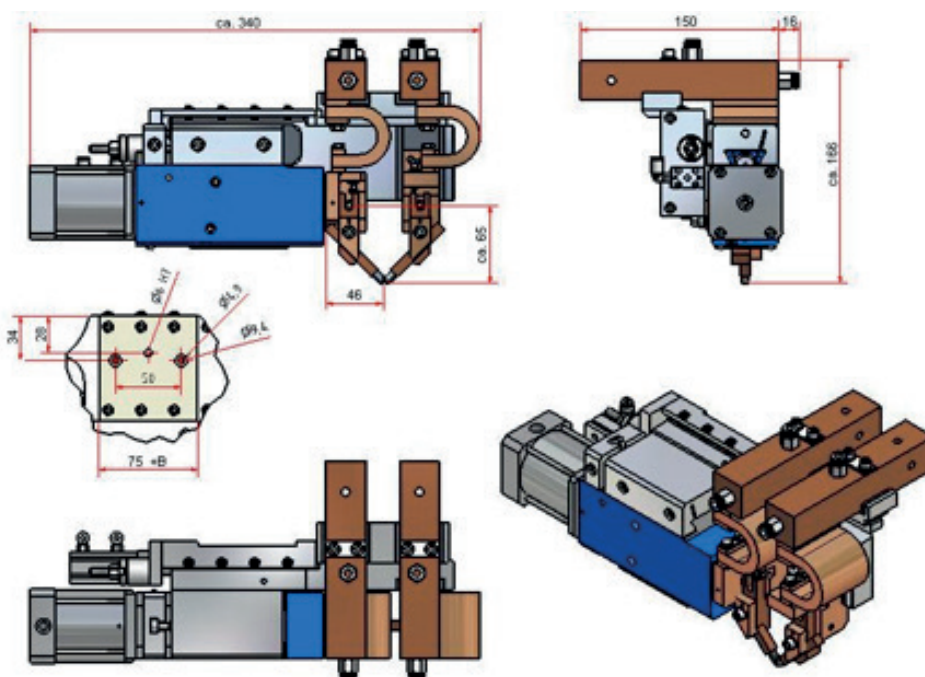
TECHNICAL SPECIFICATIONS

	fP190-Z	FP200-Z
Configuration	Weld pincer with float mounting for horizontal installation	
Maximum rating	Electric power limit	
Electrode stroke max	30 mm	
Closing stroke	pneumatic	
Welding pressure	pneumatic	
Weld force max	1100 N (options: 400 or 700 N)	3500 N
Air pressure supply	max 6 bar	
Weld force adjustment	via adjustable pressure control or proportional valve	
Electrode shape	square electrodes 7.5 x 7.5 mm	
Electrode holder	Water-cooled quick change holder	
Weld cables	2x300 mm ² , 700 mm long	2x500 mm ² , 700 mm long
Environment temp.	0-40 °C	
Cooling	Water-cooled quick-change holder	
Transmitting heat	Heat dissipation	
Legal Approval	CE compliant	

WEIGHT & DIMENSIONS – LEGAL APPROVAL

	FP190-Z	FP200-Z
Weight approx.	8,3 kg w/o secondary cable	20 kg w/o secondary cable
Dimensions (LxHxD)	340x185x166 mm	578x217x179 mm

DRAWINGS



Lindberghstrasse 1 • DE-82178 Puchheim, Germany
 T: +49 (0) 89 83 94 030 • Fax : +49 (0) 89 839403 68
 info@amadamiyachi.eu • www.amadamiyachieurope.com
 ISO 9001 Certified Company



EUROPE

Amada Miyachi Europe BV
 Helmond, The Netherlands
 T: +31 (0) 492 542 225
 info@amadamiyachi.eu

Amada Miyachi Europe Kft.
 Budapest, Hungary
 T: +36 1 431 9927
 info@amadamiyachi.eu

Amada Miyachi Europe
 Derby, United Kingdom
 T: +44 (0) 1332 361 238
 info@amadamiyachi.eu

Amada Miyachi Europe
 Saint Germain en Laye, France
 T: +33 (0) 139 046 430
 info@amadamiyachi.eu

Amada Miyachi Europe
 Torino, Italy
 T: +39 011 223 83 16
 info@amadamiyachi.eu

Amada Miyachi Europe
 Prague-West, Czech Republic
 T: +420 251 512 157
 info@amadamiyachi.eu

AMERICAS

Amada Miyachi America Inc.
 Monrovia, CA, USA
 T: +1-626-303-5676
 info@amadamiyachi.com

Amada Miyachi do Brasil Ltda.
 Sao Paulo, Brasil
 T: +55-11-4193-1187
 antonio.ruiz@miyachi.com

ASIA

Amada Miyachi Co., Ltd.
 Noda, Japan
 T: +81-4-7125-6177
 sales@miyachi.com

Amada Miyachi Shanghai, Co., Ltd.
 Shanghai, China
 T: +86-21-6448-6000
 zqzhang@msc.miyachi.com

Amada Miyachi Korea Co., Ltd.
 Gyeonggi-do, Korea
 T: +82-31-8015-6810
 dykim@mkc.miyachi.com

Amada Miyachi Taiwan Co., Ltd.
 Taipei, Taiwan R.O.C.
 T: 886-2-2397-4778
 keigaku@miyachi.com

Amada Miyachi (Thailand) Co., Ltd.
 Samutprakarn, Thailand
 T: +66-2751-9337-8
 info@mtl.miyachi.com

Amada Miyachi Vietnam Co., Ltd.
 Ho Chi Minh City, Vietnam
 T: +84-8-3771-7972

Amada Miyachi India Pvt., Ltd.
 Bangalore, Karnataka
 info@miyachiindia.com

All data, images and text are subject to change at any time. Amada Miyachi Europe GmbH reserves the right to change, modify, delete and add technical specifications and product details at any time without prior notification. © 2015 Amada Miyachi Europe GmbH.

follow us on:

